

Your Partner Stockist

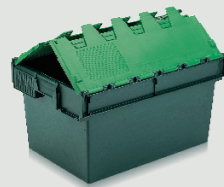
Schoeller Allibert introduced the Partner Stockist programme to promote exceptional levels of customer service and support.

Expert in a number of industries, Totebox has been selected to meet customers' storage, handling and distribution needs with a wide range of Schoeller Allibert products. Totebox has the experience and know-how to recommend a materials handling solution to save you time, reduce costs and minimise packaging waste.

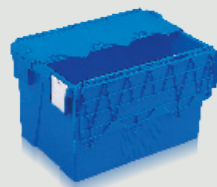
Totebox stock a wide range of colours and sizes of Schoeller Allibert trays, containers and allied products.

We are able to offer customers many benefits including fast delivery, competitive prices and the ability to order products in smaller quantities than direct from the manufacturer.

Schoeller Allibert stack nest trays and containers are tough, long lasting and cost effective. Often referred to as Returnable Transit Packaging (RTP), stack nest containers are ideal for all distribution applications.



ToteBox range



Kaiman range

● Attached lid containers (ALCs)

Containers securely stack for efficient distribution and nest to save return transport costs.

Unlike disposable packaging all our products can be used again and again, over many years, helping our customers comply with packaging waste regulations, reduce carbon footprint and save money.

Incorporating an integral hinged lid, ALCs (Attached Lid Containers) provide the secure distribution solution.

Containers stack with lids closed and nest with lids open. Push-in tamper evident security seal system ensures that seals cannot be removed without breakage – providing visual identification of whether a container has been opened.

Maxine trays inter-stack with each other and are compatible with 600x400mm dollies, stacking 2-up (side by side) on the Universal dolly DO795904.

● Wheeled dollies

Ease and speed container handling operations.



10005 (AT000504): 4 litre
Totebox Attached lid container
Ext: 300 x 200 x 130mm
Int: 245 x 160 x 101mm
Nested height: 80mm
Wt: 0.7 Kg, col: two-tone green

10010 (AT001004): 6 litre
Totebox Attached lid container
Ext: 300 x 200 x 200mm
Int: 235 x 152 x 174mm
Nested height: 80mm
Wt: 0.85 Kg, col: two-tone green

Stacks 2-up (side by side) on 400 x 300mm Toteboxes



AT432204: 18 litres
Kaiman Attached lid container
Ext: 400 x 300 x 222mm
Int: 338 x 254 x 197mm
51% height saving when nested
Wt: 1.8 Kg, colour: blue

400 x 300mm Kaiman ALCs stack 2-up (side by side) on 600 x 400mm Kaimans



10020 (AT002004): 20 litre
Totebox Attached lid container
Ext: 400 x 300 x 252mm
Int: 325 x 246 x 222mm
Nested height: 100mm
Wt: 1.65 Kg, col: two-tone green

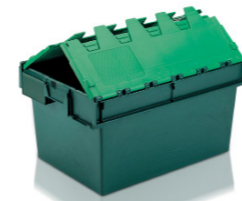
10025 (AT002504): 25 litre
Totebox Attached lid container
Ext: 400 x 300 x 320mm
Int: 321 x 244 x 295mm
Nested height: 100mm
Wt: 1.87 Kg, col: two-tone green

Stacks 2-up (side by side) on 600 x 400mm Toteboxes



AT432604: 22 litres
Kaiman Attached lid container
Ext: 400 x 300 x 264mm
Int: 334 x 254 x 239mm
59% height saving when nested
Wt: 1.9 Kg, colour: blue

AT433104: 25 litres
Kaiman Attached lid container
Ext: 400 x 300 x 306mm
Int: 329 x 250 x 282mm
64% height saving when nested
Wt: 2.1 Kg, colour: blue

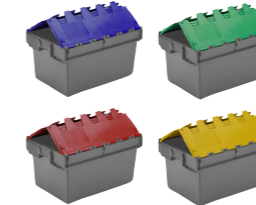


10040 (AT100404): 40 litre
Totebox Attached lid container
Ext: 600 x 400 x 250mm
Int: 515 x 343 x 215mm
Nested height: 85mm, wt: 2.79 Kg
Colour: two-tone green or grey with blue, red or yellow lid

10A5B (AT0A5B04): 54 litre
Totebox Attached lid container
Ext: 600 x 400 x 320mm
Int: 508 x 335 x 285mm
Nested height: 85mm, wt: 3.20 Kg
Colour: two-tone green or grey with blue, red or yellow lid



54 litre EcoTote
EcoTote Attached lid container.
Ref. 10A5B (AT0A5B04)
manufactured in recycled plastic
Colour: black

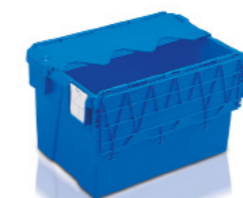


40 and 54 litre ToteBox colour options



AT642604: 48 litres
Kaiman Attached lid container
Ext: 600 x 400 x 264mm
Int: 530 x 353 x 240mm
75% height saving when nested
Wt: 3 Kg, colour: blue

AT643104: 54 litres
Kaiman Attached lid container
Ext: 600 x 400 x 306mm
Int: 514 x 350 x 281mm
64% height saving when nested
Wt: 3.2 Kg, colour: blue



AT643604: 65 litres
Kaiman Attached lid container
Ext: 600 x 400 x 365mm
Int: 508 x 346 x 340mm
70% height saving when nested
Wt: 3.5 Kg, colour: blue

AT644004: 70 litres
Kaiman Attached lid container
Ext: 600 x 400 x 400mm
Int: 521 x 343 x 375mm
73% height saving when nested
Wt: 3.7 Kg, colour: blue



10A6B (AT0A6B04): 64 litre
ToteBox Attached lid container
Ext: 600 x 400 x 365mm
Int: 501 x 328 x 330mm
Nested height: 85mm
Wt: 3.38 Kg
Colour: two-tone green

64 litre EcoTote
EcoTote Attached lid container.
Ref. 10A6B (AT0A6B04)
manufactured in recycled plastic
Colour: black



10A82 (AT10A829): 80 litres
ALC with 4 drain holes (aids de-nesting)
Ext: 710 x 460 x 368mm
Int: 597 x 374 x 330mm
78% height saving when nested
Wt: 4.0 Kg, Colour: green/green

10A83 (AT10A804): 80 litres
As AT10A829 without drain holes



00701: Security seal
Tamper evident security seal for ToteBox & DPC refs. 10020, 10025, 10040, 10A5B, 10A6B, 10A82, 10A83 and 10552. Two required per container.

00473: Label holder
Label holder cover for ToteBox refs. 10020, 10025, 1005B and 1006B.



80 litres EcoTote
EcoTote Attached lid container.
Ref. 10A82 (AT10A829) manufactured in recycled plastic
Colour: black

80 litres EcoTote
EcoTote Attached lid container.
Ref. 10A83 (AT10A804) manufactured in recycled plastic
Colour: black



AT337104: 135 litres
Ext: 1125 x 480 x 360mm
Int: 1000 x 360 x 340mm
76% height saving when nested
Wt: 6.92 Kg, Colour: red
minimum order item



AT336104: 160 litres
Ext: 675 x 575 x 615mm
Int: 560 x 430 x 540mm
85% height saving when nested
Wt: 7.98 Kg, Colour: red
minimum order item



600x400 Dolly DOJ90501
600 x 400mm wheeled dolly with 4 swivel 100mmØ nylon castors
Dim: 604 x 402 x 173mm
Max loading: 180 Kg
Wt: 4 Kg, Colour red
Carries 600x400mm Euro stacking, ALC, Maxine and 180° stack nest ranges.



Universal Dolly DO795904
800 x 600mm dolly with 4 swivel 100mmØ braked castors.
Dim: 798 x 598 x 171mm
Max loading: 500 Kg
Wt: 9.7 Kg, Colour grey
Carries two stacks of 600x400mm containers from any range.

Dolly handle HO008604
Fits Universal dolly

Stacking containers

Designed for a wide range of handling and storage applications, Schoeller Allibert stacking trays and containers are strong, durable and efficient. Containers securely stack, vertical sides provide maximum internal volume and smooth surfaces are hygienic and easy to clean.



European stacking containers



stacking containers

● Euro stacking containers

Modular inter-stacking containers with vertical sides for maximum internal volume. All models inter-stack to form a compact storage unit.

400x300mm containers stack 2-up (side by side) on 600x400mm models and 600x400mm containers stack 2-up on 800x600mm models.

Euro pallet compatibility; 600x400mm models stack 5 per layer on a 1200x1000mm pallet and 4 per layer on a 1200x800mm pallet.

Ideal for use in fridges and freezers; ventilated models promote air flow, speeding cooling and helping to maintain a constant temperature.

Accessories include lids (separate or attached), label holders, dividers and wheeled dollies.

● Stacking containers

Vertical sides provide maximum internal volume.



21005 (ES210004): 5 litres
Solid Euro stacking
Ext: 300 x 200 x 118mm
Int: 257 x 159 x 108mm
Wt: 0.42 Kg
Colour: grey or red

Stacks 2-up (side by side) on 400 x 300mm Euro stacking containers



21006 (ES100604): 6 litres
Solid Euro stacking
Ext: 400 x 300 x 74mm
Int: 355 x 255 x 64mm
Wt: 0.48 Kg
Colour: grey

Stacks 2-up (side by side) on 600 x 400mm Euro stacking containers



21010 (ES210104): 10 litres
Solid Euro stacking
Ext: 400 x 300 x 118mm
Int: 355 x 255 x 105mm
Wt: 0.8 Kg
Colour: grey or red

21009 (ES210001): 10 litres
Ventilated version of ES210104
Wt: 0.66 Kg
Colour: grey



21027 (ES431704): 15 litres
Solid Euro stacking
Ext: 400 x 300 x 175mm
Int: 354 x 254 x 162mm
Wt: 1.1 Kg
Colour: grey, red or blue

61020 (LI610204): Lid
Cover for 400x300 Euro stacking range
Colour: grey or red



21020 (ES432304): 20 litres
Solid Euro stacking
Ext: 400 x 300 x 235mm
Int: 354 x 254 x 222mm
Wt: 1.4 Kg
Colour: grey, red or blue

21026 (ES102606): 20 litres
Solid base, ventilated sides version of ES432304
Wt: 1.18 Kg, Colour: grey



21030 (ES103004): 30 litres
Solid Euro stacking
Ext: 400 x 300 x 319mm
Int: 355 x 255 x 300mm
Wt: 1.77 Kg
Colour: grey



21008 (ES100804): 8 litres
Solid Euro stacking
Ext: 600 x 400 x 50mm
Int: 555 x 355 x 40mm
Wt: 0.8 Kg
Colour: grey

600 x 400mm Euro stackers are all compatible with 600x400 wheeled dollies and stack 2-up (side by side) on 800x600mm Euros and the Universal dolly.



21014 (ES640701): 12 litres
Ventilated Euro stacking
Ext: 600 x 400 x 75mm
Int: 556 x 356 x 62mm
Wt: 0.9 Kg
Colour: grey

21013 (ES640704): 12 litres
Solid version of ES640701
Wt: 1.1 Kg
Colour: grey, red or blue



2A021 (ES641204): 21 litres
Solid Euro stacking
Ext: 600 x 400 x 120mm
Int: 556 x 356 x 107mm
Wt: 1.5 Kg
Colour: grey, red or blue

2A022 (ES641201): 21 litres
Ventilated version of ES641204
Wt: 1.2 Kg, Colour: grey

Both above models also available in recycled black (not Suitable for direct food contact)



20016 (ES001611): 20 litres
Ventilated Euro stacking
Ext: 600 x 400 x 120mm
Int: 555 x 355 x 104mm
Wt: 1.1 Kg
Colour: grey



20029 (ES200201): 28 litres
Ventilated Euro stacking
Ext: 600 x 400 x 150mm
Int: 555 x 355 x 139mm
Wt: 1.25 Kg
Colour: grey

20028 (ES200204): 28 litres
Solid version of ES200201
Wt: 1.48 Kg
Colour: grey



21033 (ES641704): 34 litres
Solid Euro stacking
Ext: 600 x 400 x 175mm
Int: 556 x 356 x 162mm
Wt: 1.8 Kg
Colour: grey, red or blue
Also in recycled black (not Suitable for direct food contact)

ES641701: 34 litres
Ventilated Euro stacking
Ext: 600 x 400 x 175mm
Int: 556 x 356 x 162mm
Wt: 1.4 Kg, Colour: grey



2A049 (ES2A0405): 45 litres
Solid Euro with cut-out handles
Ext: 600 x 400 x 235mm
Int: 555 x 355 x 220mm
Wt: 2.14 Kg, colour: grey
Also in recycled black (not Suitable for direct food contact)

2A045 (ES2A0404): 45 litres
As ES2A0405 with solid hand-holds
Wt: 2.18 Kg, Colour: grey or red



2A044 (ES2A0401): 45 litres
Ventilated Euro stacking
Ext: 600 x 400 x 235mm
Int: 555 x 355 x 215mm
Wt: 1.83 Kg
Colour: grey



21054 (ES210504): 54 litres
Solid Euro stacking
Ext: 600 x 400 x 280mm
Int: 555 x 355 x 265mm
Wt: 2.51 Kg, Colour: grey

21055 (ES105501): 52 litres
Ventilated Euro stacking
Ext: 600 x 400 x 280mm
Int: 555 x 355 x 255mm
Wt: 2.18 Kg, Colour: grey



21060 (ES210605): 60 litres
Solid Euro stacking
Ext: 600 x 400 x 319mm
Int: 555 x 355 x 300mm
Wt: 2.75 Kg, colour: grey or red

61060 (LI106004): Lid
Cover for 600x400 Euros
Colour: grey, red or white

21063 (ES210604): 60 litres
As ES210605 with solid hand-holds
Wt: 2.88 Kg, colour: grey



21064 (ES210601): 60 litres
Ventilated Euro stacking
Ext: 600 x 400 x 319mm
Int: 555 x 355 x 294mm
Wt: 2.33 Kg, Colour: grey

21061 (ES210606): 60 litres
Solid base ventilated sides version of above, Wt: 2.31 Kg, Colour: grey



20085 (ES644005): 75 litres
Solid Euro stacking
Ext: 600 x 400 x 400mm
Int: 556 x 356 x 387mm
Wt: 3.1 Kg, Colour: grey

20086 (ES200806): 75 litres
Ventilated version of ES200805
Wt: 3.06 Kg, Colour: grey



600x400mm Euros are compatible with 600x400 wheeled dollies and stack 2-up (side by side) on 800x600mm Euros and the Universal dolly.



21090 (ES210905): 87 litres
Solid Euro stacking
Ext: 800 x 600 x 235mm
Int: 755 x 555 x 205mm
Wt: 3.85 Kg
Colour: grey

21091 (ES210901): 87 litres
Ventilated version of ES210905
Wt: 3.33 Kg, colour: grey

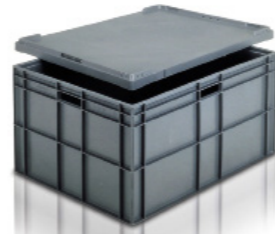


21136 (ES211306): 125 litres
Solid base, ventilated sides Euro stacking
Ext: 800 x 600 x 319mm
Int: 755 x 555 x 295mm
Wt: 4.06 Kg
Colour: grey



21135 (ES157805): 125 litres
Solid Euro stacking
Ext: 800 x 600 x 319mm
Int: 752 x 555 x 305mm
Wt: 4.4 Kg
Colour: grey

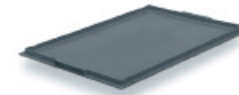
61087 (LI108704): lid
Cover for 800x600 Euro stacking range



21162 (ES211605): 162 litres
Solid Euro stacking
Ext: 800 x 600 x 412mm
Int: 755 x 555 x 382mm
Wt: 5.63 Kg, colour: grey

61086 (LI108604): Snap-shut lid

21164 (ES211606): 162 litres
Solid base, ventilated sides version of ES211605
Wt: 4.99 Kg, colour: grey



Covers
Euro stacking container covers
Ref. 61020 (LI610204):
400 x 300mm
Colour: grey or red
Ref. 61060 (LI106004):
600 x 400mm
Colour: grey, red or white
Ref. 61087 (LI108704):
800 x 600mm
Colour: grey



Snap shut lids
Secure fitting lid for Euro stacking containers
Ref. 61045 (LI104504):
600 x 400mm
Colour: grey
Ref. 61086 (LI108604):
800 x 600mm
Colour: grey



Divider strips
Snap to size & interlock to divide Euro stacking containers
OT800404: 1,104 x 45mm
OT800804: 1,104 x 88mm
OT801504: 1,100 x 150mm
OT801904: 1,100 x 190mm

OTPE9004: Card clip
Stainless steel card clip for Euro stackers



20C10 (ES0C1004): 10 litres
Solid Euro with integral lid
Ext: 400 x 300 x 129mm
Int: 355 x 255 x 105mm
Wt: 1.21 Kg, colour: grey

21C27 (ES1C2704): 15 litres
Solid Euro with integral lid
Ext: 400 x 300 x 186mm
Int: 355 x 255 x 164mm
Wt: 1.43 Kg, colour: grey



21C20 (ES1C2004): 20 litres
Solid Euro with integral lid
Ext: 400 x 300 x 246mm
Int: 355 x 255 x 220mm
Wt: 1.68 Kg, colour: grey

21C30 (ES1C3004): 30 litres
Solid Euro with integral lid
Ext: 400 x 300 x 330mm
Int: 355 x 255 x 300mm
Wt: 2.18 Kg, colour: grey



20C28 (ES0C2804): 28 litres
Solid Euro with integral lid
Ext: 600 x 400 x 161mm
Int: 555 x 355 x 139mm
Wt: 2.11 Kg, colour: grey

21C33 (ES1C3304): 33 litres
Solid Euro with integral lid
Ext: 600 x 400 x 186mm
Int: 555 x 355 x 164mm
Wt: 2.48 Kg, colour: grey



21C45 (ES1C4504): 45 litres
Solid Euro with integral lid
Ext: 600 x 400 x 246mm
Int: 555 x 355 x 220mm
Wt: 3.0 Kg, colour: grey

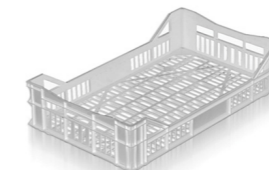
21C54 (ES1C5404): 54 litres
Solid Euro with integral lid
Ext: 600 x 400 x 291mm
Int: 555 x 355 x 265mm
Wt: 3.33 Kg, colour: grey



20C85 (ES0C8505): 75 litres
Solid Euro with integral lid
Ext: 600 x 400 x 423mm
Int: 555 x 355 x 394mm
Wt: 4.47 Kg, colour: grey



29049 (SN290401): 50 litres
Ventilated stacking container
Ext: 550 x 366 x 295mm
Int: 518 x 333 x 260mm
Wt: 2.02 Kg, colour: brown-red



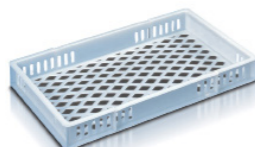
41042 (RB410401): 43 litres
Ventilated stacking container
Ext: 750 x 450 x 165mm
Int: 724 x 425 x 138mm
Wt: 1.68 Kg, colour: white



RB155004: 28 litres
Solid stacking container for hygienic food handling
Ext: 654 x 395 x 155mm
Int: 585 x 325 x 139mm
Wt: 1.9 Kg, colour: natural



RB318304: 22 litres
Solid 30"x18" confectionery tray
Ext: 762 x 457 x 92mm
Int: 715 x 412 x 72mm
Wt: 1.8 Kg, colour: natural
Compatible with lid ref. LI301804 and dolly ref. DO301801



RB318301: 22 litres
Ventilated 30"x18" confectionery tray
Ext: 762 x 457 x 92mm
Int: 715 x 412 x 72mm
Wt: 1.4 Kg, colour: natural
Compatible with lid ref. LI301804 and dolly ref. DO301801



RB318306: 22 litres
Ventilated sides, solid base 30"x18" confectionery tray
Ext: 762 x 457 x 92mm
Int: 715 x 412 x 72mm
Wt: 1.7 Kg, colour: natural
Compatible with lid ref. LI301804 and dolly ref. DO301801



RB318504: 32 litres
Solid 30"x18" confectionery tray
Ext: 762 x 457 x 123mm
Int: 715 x 412 x 103mm
Wt: 2.6 Kg, colour: natural

RB318501: 32 litres
Ventilated version of RB318504
Wt: 1.9 Kg, colour: natural



RB318704: 48 litres
Solid 30"x18" confectionery tray
Ext: 762 x 457 x 176mm
Int: 715 x 412 x 156mm
Wt: 2.2 Kg, colour: natural
Compatible with lid ref. LI301804 and dolly ref. DO301801



RB318701: 48 litres
Ventilated 30"x18" confectionery tray
Ext: 762 x 457 x 176mm
Int: 715 x 412 x 156mm
Wt: 2.1 Kg, colour: natural

RB318706: 48 litres
Ventilated sides solid base version of RB318701
Wt: 2.1 Kg, colour: natural



RM35DYN
Dolly for 30"x18" confectionery trays
colour: yellow

Schoeller Allibert stack nest trays and containers are tough, long lasting and cost effective. Often referred to as Returnable Transit Packaging (RTP), stack nest containers are ideal for all distribution applications.

Containers securely stack for efficient distribution and nest to save return transport costs.

Unlike disposable packaging all our products can be used again and again, over many years, helping our customers comply with packaging waste regulations, reduce carbon footprint and save money.



180° stack nest



bale arm containers



bread baskets

● 180° stacking & nesting containers

180° stacking & nesting containers stack when loaded and nest when empty by turning through 180° – saving up to 70% when empty.

Bi-colour containers clearly identify stacking and nesting positions to prevent accidentally crushing the contents by stacking in the wrong orientation.

180° Trad models inter-stack with each other and are compatible with 600x400mm dollies, stacking 2-up (side by side) on the Universal dolly DO795904.

● Maxinest bale arm stacking & nesting containers

The market leading produce tray for retail grocery logistics and point of-sale display. Maxinest trays inter-stack with each other for the safe distribution of fruit & vegetables, prepackage meats, fish and ready meals. Containers nest saving up to 76% of their original height, for the return journey through the supply chain.

Dual height Maxinests provide two or three working heights. This enables containers only to be part filled, for example with delicate produce which would be crushed if filled to the maximum loaded height. The alternative stacked height allows efficient distribution and means the same tray can be used for a number of different applications.

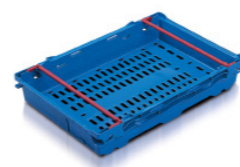
Maxinest trays inter-stack with each other and are compatible with 600x400mm dollies, stacking 2-up (side by side) on the Universal dolly DO795904.



MAXInest 



SN431802: 15 litres
Ventilated **Maxinest**® stacking & nesting with swing bar.
Stacks 2-up (side by side) on 600x400mm **Maxinest**® trays.
Ext: 400 x 300 x 180mm
Int: 364 x 264 x 144mm
70% height saving when nested
Wt: 1.0 Kg, colour: blue



DH641002: 16 & 10 litres
Ventilated dual height **Maxinest**® with two working heights
Ext: 600 x 400 x 106mm
Int: 552 x 352 x 50mm
50% & 60% saving when nested
Wt: 1.2 Kg
Colour: blue



DH641602: 26 & 21 litres
Ventilated dual height **Maxinest**® with two working heights
Ext: 600 x 400 x 167mm
Int: 552 x 352 x 110mm
34% & 76% saving when nested
Wt: 1.5 Kg
Colour: blue



SN641907: 35 litres
Solid **Maxinest**® stacking & nesting with swing bar
Ext: 600 x 400 x 199mm
Int: 546 x 349 x 172mm
76% height saving when nested
Wt: 1.8 Kg, colour: blue



SN642402: 44 litres
Ventilated **Maxinest**® stacking & nesting with swing bar
Ext: 600 x 400 x 253mm
Int: 548 x 352 x 226mm
74% height saving when nested
Wt: 2.0 Kg, colour: blue
Also in recycled black (not suitable for direct food contact)



SN642602: 46 litres
Ventilated **Maxinest**® stacking & nesting with swing bar
Ext: 600 x 400 x 267mm
Int: 548 x 352 x 240mm
74% height saving when nested
Wt: 2.1 Kg, colour: blue

SN641902: 35 litres
Ventilated version of SN641907
Wt: 1.7 Kg
Colour: blue, green or red
Also in recycled black (not suitable for direct food contact)



DH740002: 43 & 28 litres
Ventilated dual height stacking & nesting with swing bar
Ext: 691 x 441 x 194mm
Int: 635 x 391 x 168mm
43% & 64% height saving when nested
Wt: 2 Kg
Colour: blue

Compatible with dolly ref. DO684301.



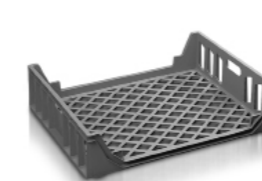
DH701807: 54 litres
Solid stacking & nesting with swing bar
Ext: 600 x 400 x 302mm
Int: 570 x 370 x 270mm
72% height saving when nested
Wt: 2.4 Kg
Colour: blue

Compatible with 600x400mm dollies, stacks 2-up (side by side) on the Universal dolly.



DH701802: 54 litres
Ventilated stacking & nesting with swing bar
Ext: 600 x 400 x 302mm
Int: 570 x 370 x 270mm
72% height saving when nested
Wt: 2.1 Kg
Colour: blue

Compatible with 600x400mm dollies, stacks 2-up (side by side) on the Universal dolly.

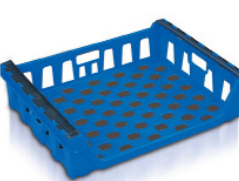


SN151501: 63 litres
15 loaf bread basket, cross-nests by turning through 90°
Ext: 772 x 627 x 176mm
Int: 716 x 586 x 149mm
50% height saving when nested
Wt: 2.1 Kg
Colour: grey



SN121202: 65 litres
12 loaf stack nest bread basket with swing bar and open front
Ext: 762 x 508 x 216mm
Int: 697 x 463 x 190mm
50% height saving when nested
Wt: 1.9 Kg
Colour: grey

Compatible with dolly DO302001 (made to order item)



SN150201: 68 litres
15 loaf stack nest bread basket with swing bar and open front
Ext: 788 x 617 x 190mm
Int: 723 x 569 x 165mm
50% height saving when nested
Wt: 2.4 Kg
Colour: blue

Compatible with dolly DO322601 (made to order item)



11020 (SN102001): 18 litres
Ventilated 180° Trad stack nest
Ext: 600 x 400 x 117mm
Int: 458 x 338 x 102mm
70% height saving when nested
Wt: 1.09 Kg, Colour: grey

11018 (SN101804): 18 litres
Solid version of SN102001
Wt: 1.18 Kg, Colour: grey/grey



11032 (SN110305): 32 litres
Solid 180° Trad stack nest
Ext: 600 x 400 x 200mm
Int: 457 x 338 x 177mm
70% height saving when nested
Wt: 1.84 Kg
Colour: red/grey or grey/grey

11034 (SN110301): 32 litres
Ventilated version of SN110305
Wt: 1.6 Kg, Colour: grey/grey



11051 (SN105105): 50 litres
Solid 180° Trad stack nest
Ext: 600 x 400 x 300mm
Int: 460 x 340 x 270mm
70% height saving when nested
Wt: 2.3 Kg
Colour: red/grey or grey/grey

11053 (SN105201): 50 litres
Ventilated version of SN105105
Wt: 2.1 Kg
Colour: grey/grey



11066 (SN106601): 70 litres
Ventilated 180° Trad stack nest
Ext: 600 x 400 x 400mm
Int: 460 x 340 x 370mm
70% height saving when nested
Wt: 2.65 Kg, Colour: grey

11065 (SN106505): 70 litres
Solid version of SN106601
Wt: 3.06 Kg, Colour: grey/grey



Eco Crates

A range of low cost plastic containers, manufactured in recycled material.

Euro stacking containers

Stacking containers with vertical sides for maximum internal volume. Containers inter-stack to form a compact handling unit.

Attached Lid Containers

Incorporating an integral hinged lid and tamper-evident security, containers nest when empty to save valuable space on return transport.

Maxinest

Containers securely stack on bale-arms and nest when empty, with bale-arms pushed back, for efficient return logistics.

Plastic pallets

Lightweight distribution pallets provide significant fuel savings over heavier pallets. Pallets nest for return trip.



2A021 (ES641204): 21 litres
Solid Euro stacking
Ext: 600 x 400 x 120mm
Int: 556 x 356 x 107mm
Wt: 1.5 Kg
Colour: black
Manufactured in recycled plastic (not Suitable for direct food contact)



2A022 (ES641201): 21 litres
Ventilated Euro stacking
Ext: 600 x 400 x 120mm
Int: 556 x 356 x 107mm
Wt: 1.2 Kg
Colour: black
Manufactured in recycled plastic (not Suitable for direct food contact)



21033 (ES641704): 34 litres
Solid Euro stacking
Ext: 600 x 400 x 175mm
Int: 556 x 356 x 162mm
Wt: 1.8 Kg
Colour: black
Manufactured in recycled plastic (not Suitable for direct food contact)



2A045 (ES2A0404): 45 litres
Solid Euro stacking
Ext: 600 x 400 x 235mm
Int: 555 x 355 x 220mm
Wt: 2.18 Kg
Colour: black
Manufactured in recycled plastic (not Suitable for direct food contact)



1I664404
Drop-on lid for 600x400mm Euro stacking containers
Colour: black
Manufactured in recycled plastic (not Suitable for direct food contact)



10A5B (AT0A5B04): 54 litre Totebox Attached lid container
Ext: 600 x 400 x 320mm
Int: 508 x 335 x 285mm
Nested height: 85mm, wt: 3.20 Kg
Colour: black
Manufactured in recycled plastic (not Suitable for direct food contact)



10A6B (AT0A6B04): 64 litre Totebox Attached lid container
Ext: 600 x 400 x 365mm
Int: 501 x 328 x 330mm
Nested height: 85mm
Wt: 3.38 Kg
Colour: black
Manufactured in recycled plastic (not Suitable for direct food contact)



10A82 (AT10A829): 80 litres Totebox ALC with 4 drain holes (aids de-nesting)
Ext: 710 x 460 x 368mm
Int: 597 x 374 x 330mm
78% height saving when nested
Wt: 4.0 Kg
Colour: black
Manufactured in recycled plastic (not Suitable for direct food contact)



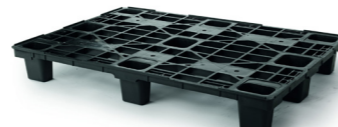
SN641902: 35 litres
Ventilated **Maxinest**® stacking & nesting with swing bar
Ext: 600 x 400 x 199mm
Int: 546 x 349 x 172mm
76% height saving when nested
Wt: 1.7 Kg
Colour: black
Manufactured in recycled plastic (not Suitable for direct food contact)



SN642402: 44 litres
Ventilated **Maxinest**® stacking & nesting with swing bar
Ext: 600 x 400 x 253mm
Int: 548 x 352 x 226mm
74% height saving when nested
Wt: 2.0 Kg
Colour: black
Manufactured in recycled plastic (not Suitable for direct food contact)



3F003 (PKF00301): 1200x1000mm
Packpal pallet with 9 feet (nests when empty), open deck and load retaining lip
Dim: 1200 x 1000 x 147mm
Nested height: 55mm
Mobile load: 650 Kg
Static load: 1500 Kg
Not suitable for pallet racking
Wt: 7.3 Kg, Colour: black
Manufactured in recycled plastic (not Suitable for direct food contact)



1855.508.930: 1200x1000mm
Lightweight pallet with 9 feet (nests when empty), open deck and load retaining lip
Dim: 1200 x 1000 x 155mm
Nested height: 45mm
Mobile load: 1000 Kg
Static load: 2500 Kg
Not suitable for pallet racking
Wt: 6.5 Kg, Colour: black
Manufactured in recycled plastic (not Suitable for direct food contact)

Products for bulk, heavy-duty and hygienic storage and distribution.

Bulk containers meet a wide range of handling requirements, including caps & closures, clothing & textiles, fresh fish, frozen meat, granules, metal components & fixings, plastic mouldings, vegetable harvesting, wiring looms, etc.

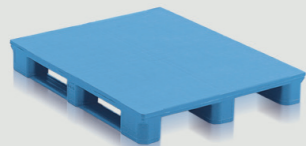
Plastic pallets provide the ideal solution for hygiene critical applications. Light weight pallets save fuel costs during distribution. Heavy duty models safely rack loads of up to 1.2 tonnes.



folding bulk containers



rigid bulk containers



pallets

● Maxipac folding containers

Ideal for a wide range of handling, distribution and point-of-sale applications. Maxipac folds flat when empty, drop-doors provide easy access, available with wheeled or pallet base.

● Folding large containers (FLCs)

Stacks up to five high carrying a unit load of 500Kg - a combined load of 2.5 tonnes. FLCs fold flat when empty, saving valuable space on return transport. Easy and quick to assemble and fold, drop-doors allow easy access - even when stacked. TYTAN is lighter, folds flatter and has a larger volume than any other container in its class.

● Geobox & Jumbox rigid bulk containers

Light and strong, Geoboxes stack up to ten high loaded to 450Kg each - a total load of 4.5 tonnes. Heavy duty Jumbox stacks ten high carrying a 650Kg unit load - a combined load of 6.5 tonnes.

● Universal pallet

The 800x600mm half size pallet is ideal for applications where space is limited, such as retail distribution and point-of-sale display or JIT deliveries to assembly plants.

● Packpal pallets

The light weight distribution pallet, Packpal with 9 feet nests when empty saving return transport costs.

● Maestro pallets

The ultimate plastic pallet, Maestro is strong, durable and extremely hygienic. The standard pallet can rack loads of up to 1.2 tonnes (reinforced versions rack up to 1.6 tonnes). Smooth surfaces, free from dirt traps, are easy to clean.



MAXIPAC



BD702692: 357 litres
Maxipac folding bulk container
Ext: 800 x 600 x 1000mm
Int: 756 x 556 x 846mm
68% height saving when folded
Loading: 250 Kg on base unit
Wt: 22 Kg, colour: black



BD702792: 357 litres
Maxipac with wheeled castors
Ext: 800 x 600 x 1080mm
Int.: 756 x 556 x 843mm
61% height saving when folded
Loading: 250 Kg on base unit
Wt: 25.5 Kg, colour: black



9146.000 - 800 litres
Tytan® FLC; 3 runners with folding door on one long & one short side
Ext: 1200 x 1000 x 975mm
Int: 1121 x 921 x 775mm
Folded ht: 386mm
Weight: 48 Kg, colour: black
Unit load: 500 Kg x 5 high

GEOBOX



27250 (GB725004): 250 litres
Solid Geobox with 2 runners
Ext: 1000 x 600 x 662mm
Int: 929 x 544 x 519mm
Unit load: 200 Kg x 10 high
Wt: 13.5 Kg, colour: brown-red



27600 (GB760604): 543 litres
Solid Geobox with 2 runners
Ext: 1200 x 1000 x 750mm
Int: 1110 x 910 x 545mm
Unit load: 450 Kg x 10 high
Wt: 34 Kg, colour: brown-red



27601 (GB760101): 543 litres
Ventilated Geobox with 2 runners
Ext: 1200 x 1000 x 750mm
Int: 1110 x 910 x 545mm
Unit load: 450 Kg x 10 high
Wt: 33 Kg, colour: brown-red
Compatible with lid ref. LIC40204

LIC40204: Geobox lid
Lid for 1200x1000mm Geoboxes

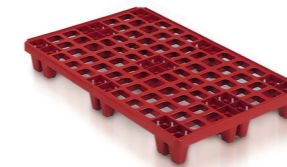


27602 (GB760904): 543 litres
Solid Geobox with 6 feet
Ext: 1200 x 1000 x 750mm
Int: 1110 x 910 x 545mm
Unit load: 450 Kg x 10 high
Wt: 33 Kg, colour: brown-red
Compatible with lid ref. LIC40204

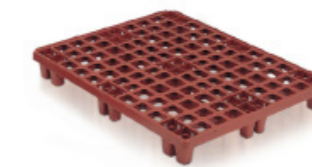
UNIVERSAL PALLET



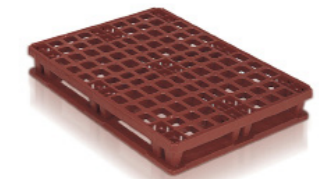
PA262804: 800x600mm
Universal pallet
Dim: 800 x 600 x 165mm
Mobile load: 500 Kg
Static load: 1000 Kg
Racked load: n/a
Wt: 7 Kg, Colour: black



3E003 (PKE00301): 1200x800mm
Packpal pallet with 9 feet (nests when empty), open deck and load retaining lip
Dim: 1200 x 800 x 147mm
Mobile load: 650 Kg
Static load: 1500 Kg
Not suitable for pallet racking
Wt: 5.9 Kg, colour: brown-red



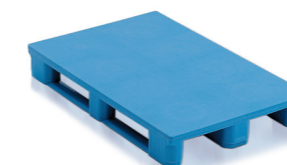
3F003 (PKF00301): 1200x1000mm
Packpal pallet with 9 feet (nests when empty), open deck and load retaining lip
Dim: 1200 x 1000 x 147mm
Mobile load: 650 Kg
Static load: 1500 Kg
Not suitable for pallet racking
Wt: 7.3 Kg, colour: brown-red
Also in recycled black (not Suitable for direct food contact)



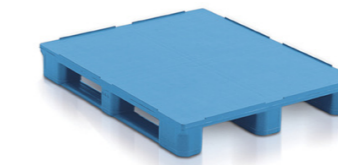
3F503 (PKF50301): 1200x1000
Packpal pallet with perimeter runners, open deck & load retaining lip.
Dim: 1200 x 1000 x 172mm
Mobile load: 1200 Kg
Static load: 1500 Kg
Racked load: 700 Kg
Wt: 11.9 Kg, colour: brown-red

3F303 (PKF30301): 1200x1000
As PKF50301 with 3 runners
Mobile load: 650 Kg,
static load: 1500 Kg,
racked load: n/a,
Wt: 9.3 Kg, colour: brown-red

MAESTRO



3L300 (MAL30004): 1200x800mm
Maestro pallet with 3 runners & solid smooth deck
Dim: 1200 x 800 x 158mm
Mobile load: 1200 Kg
Static load: 5000 Kg
Racked load: 1000 Kg
Wt: 19 Kg, colour: blue



3M302 (MAM30204): 1200x1000mm
Maestro pallet with 3 runners & solid smooth deck with 7mm load retaining lip
Dim: 1200 x 1000 x 165mm
Mobile load: 1500 Kg
Static load: 5000 Kg
Racked load: 1200 Kg
Wt: 23.5 Kg, colour: blue



CO101501: Pallet collar
Transforms a standard 1200x1000 plastic or wood pallet into a robust bulk container. Seven folded collars fit into one assembled unit, saving valuable transport space on the return journey.
Ext: 1225 x 1025 x 352mm
Int: 1160 x 960 x 300mm
Folded: 1150 x 130 x 352mm
Load: 500 Kg (up to 4 collars high)
Wt: 6.2 Kg, colour: black